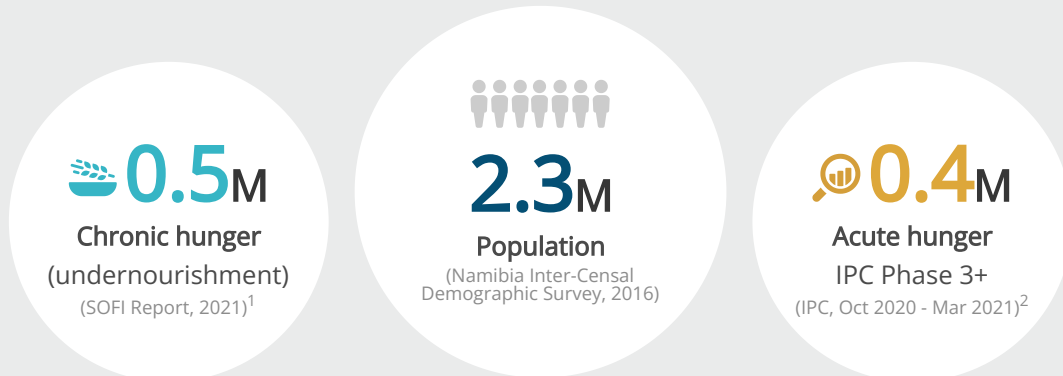


HungerMap^{LIVE}: Namibia insight and key trends

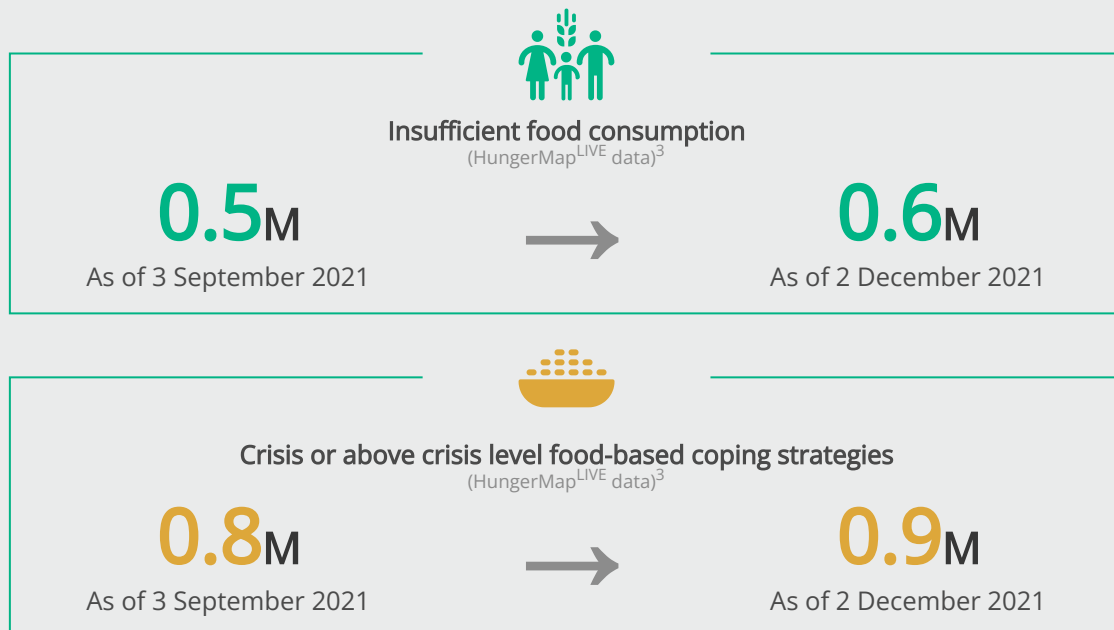
By the World Food Programme (WFP) | 2 December 2021

FOOD INSECURITY AT A GLANCE



The HungerMap^{LIVE} tracks core indicators of **acute hunger** in near real-time.

Acute hunger is measured by key indicators such as household food consumption, livelihood behaviors, child nutritional status, mortality, access to clean drinking water and other contextual factors. The HungerMap^{LIVE} primarily tracks trends on household food consumption, consumption-based coping and livelihood changes to track multiple aspects of food insecurity. As these are outcome level 1 indicators in the Integrated Food Security Phase Classification (IPC) Framework, they can provide early indications of potential shifts in acute food insecurity.



Methodology Note: The HungerMap^{LIVE} includes data from two sources: (1) WFP's continuous, near real-time monitoring systems, which remotely collect thousands of data daily through live calls conducted by call centres around the world; and (2) machine learning-based predictive models. Therefore, to note this differentiation, this report indicates whether a region's data is based on WFP's near real-time monitoring systems (marked 'ACTUAL') or predictive models (marked 'PREDICTED').

¹ Chronic hunger (undernourishment) is defined by people not able to meet long-term food consumption requirements. Source: FAO, IFAD, UNICEF, WFP and WHO. 2021. The State of Food Security and Nutrition in the World 2021.

² Source: IPC/CH analysis (ipcinfo.org)

³ Source: WFP HungerMap LIVE analysis, updated daily.

Regions with the highest prevalence of insufficient food consumption

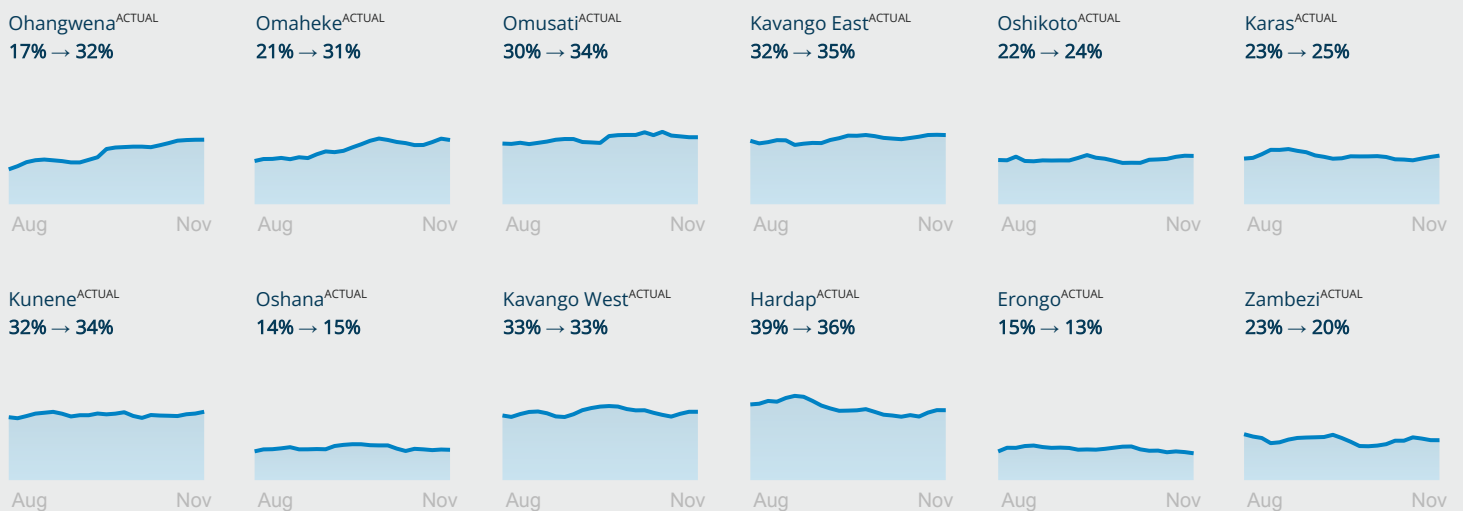
Currently, the regions with the highest prevalence of insufficient food consumption, in order of severity, are: Hardap^{ACTUAL}, Kavango East^{ACTUAL}, Kunene^{ACTUAL}, Omusati^{ACTUAL}, Kavango West^{ACTUAL}, Ohangwena^{ACTUAL}, Omaheke^{ACTUAL}, Karas^{ACTUAL}, Oshikoto^{ACTUAL}, Otjozondjupa^{ACTUAL}, Zambezi^{ACTUAL}, Oshana^{ACTUAL}.

These regions account for 85% of the total number of people with insufficient food consumption in Namibia—amounting to approximately 471k people, increasing by 47.9k (11%) compared to 90 days ago.

	PREVALENCE OF INSUFFICIENT FOOD CONSUMPTION (HIGH → LOW)	TOTAL POPULATION	NO. AFFECTED
Hardap ^{ACTUAL}	36%	86.9k	31.1k
Kavango East ^{ACTUAL}	35%	145k	50.6k
Kunene ^{ACTUAL}	34%	99.4k	33.6k
Omusati ^{ACTUAL}	34%	242k	81.3k
Kavango West ^{ACTUAL}	33%	81.1k	27.1k
Ohangwena ^{ACTUAL}	32%	246k	79.6k
Omaheke ^{ACTUAL}	31%	72.2k	22.7k
Karas ^{ACTUAL}	25%	80.0k	20.0k
Oshikoto ^{ACTUAL}	24%	194k	46.8k
Otjozondjupa ^{ACTUAL}	21%	148k	31.0k
Zambezi ^{ACTUAL}	20%	97.2k	19.5k
Oshana ^{ACTUAL}	15%	182k	27.4k

Trends of the prevalence of insufficient food consumption over the past 90 days

These graphs, all on a scale from 0% to 100%, show the trend in the prevalence of insufficient food consumption over the past 90 days. The percentages detailed below the region name indicate the change in the prevalence of insufficient food consumption from 90 days ago to today, with regions sorted by the increase in prevalence of insufficient food consumption.



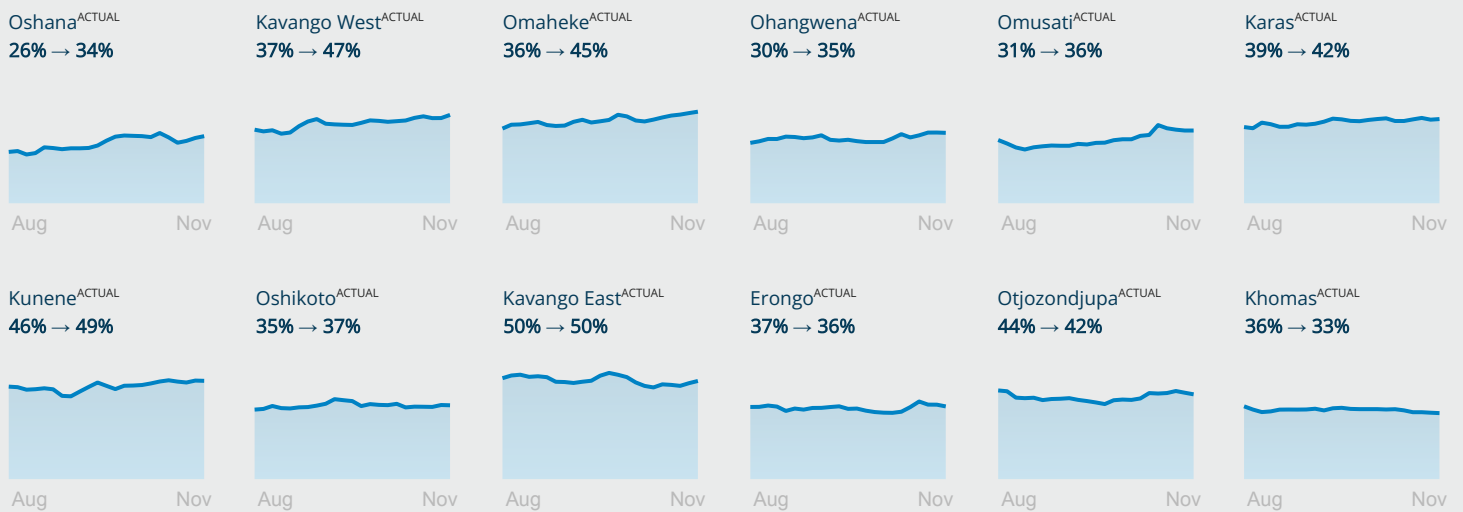
Regions with the highest prevalence of crisis or above crisis level food-based coping strategies

To support the global COVID-19 response, WFP has expanded its near real-time remote monitoring systems to assess the food-based coping situation in Namibia. The table below shows the current situation in regions with the highest prevalence of crisis or above crisis level food-based coping strategies. These regions account for 77% of the total number of people currently monitored for food-based coping in Namibia—amounting to approximately 672k people.

	PREVALENCE OF CRISIS OR ABOVE CRISIS LEVEL FOOD-BASED COPING STRATEGIES (HIGH → LOW)	TOTAL POPULATION	NO. AFFECTED
Kavango East ^{ACTUAL}	50%	145k	72.7k
Kunene ^{ACTUAL}	49%	99.4k	48.4k
Kavango West ^{ACTUAL}	47%	81.1k	38.0k
Omaheke ^{ACTUAL}	45%	72.2k	32.6k
Otjozondjupa ^{ACTUAL}	42%	148k	62.6k
Karas ^{ACTUAL}	42%	80.0k	33.6k
Zambezi ^{ACTUAL}	37%	97.2k	36.1k
Oshikoto ^{ACTUAL}	37%	194k	71.2k
Omusati ^{ACTUAL}	36%	242k	88.2k
Erongo ^{ACTUAL}	36%	195k	70.9k
Ohangwena ^{ACTUAL}	35%	246k	86.8k
Hardap ^{ACTUAL}	35%	86.9k	30.5k

Trends of the prevalence of crisis or above crisis level food-based coping strategies over the past 90 days

These graphs, all on a scale from 0% to 100%, show the trend in the prevalence of crisis or above crisis level food-based coping strategies over the past 90 days. The percentages detailed below the region name indicate the change in the prevalence of crisis or above crisis level food-based coping strategies from 90 days ago to today, with regions sorted by the increase in prevalence of crisis or above crisis level food-based coping strategies.



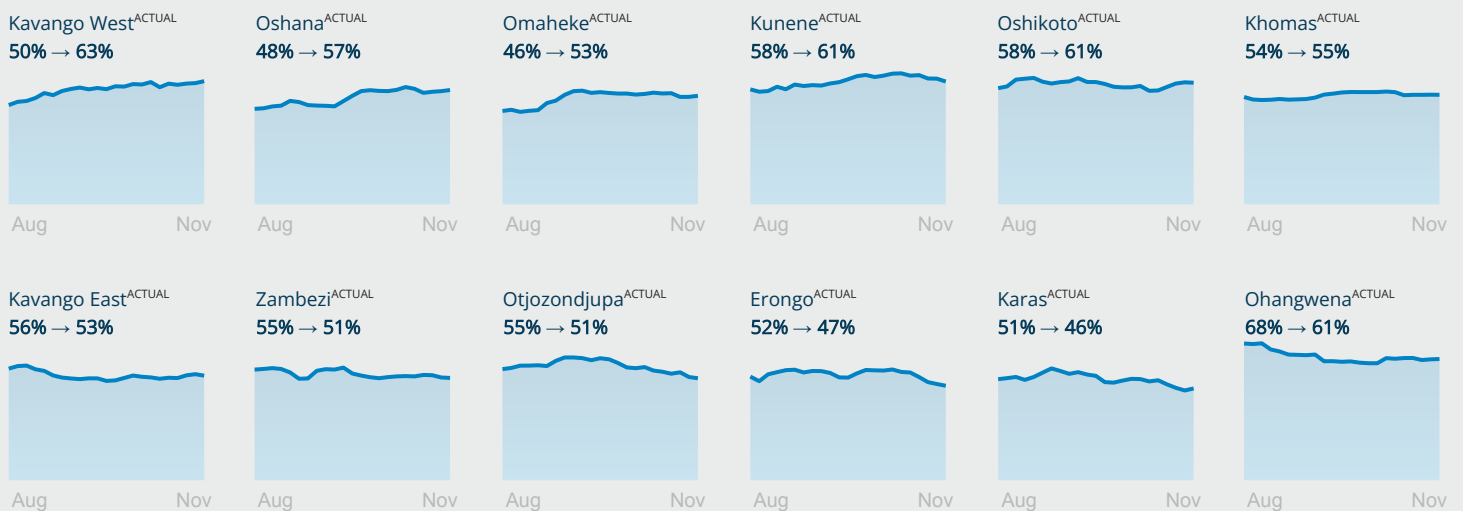
Regions with the highest prevalence of challenges accessing markets¹

To support the global COVID-19 response, WFP has expanded its near real-time remote monitoring systems to assess the market access situation in Namibia. The table below shows the current situation in regions with the highest prevalence of challenges accessing markets. These regions account for 94% of the total number of people currently monitored for market access in Namibia—amounting to approximately 1.18M people.

	PREVALENCE OF CHALLENGES ACCESSING MARKETS (HIGH → LOW)	TOTAL POPULATION	NO. AFFECTED
Kavango West ^{ACTUAL}	63%	81.1k	51.3k
Oshikoto ^{ACTUAL}	61%	194k	118k
Kunene ^{ACTUAL}	61%	99.4k	60.5k
Ohangwena ^{ACTUAL}	61%	246k	149k
Oshana ^{ACTUAL}	57%	182k	104k
Khomas ^{ACTUAL}	55%	429k	235k
Omusati ^{ACTUAL}	54%	242k	131k
Omaheke ^{ACTUAL}	53%	72.2k	38.5k
Kavango East ^{ACTUAL}	53%	145k	76.4k
Otjozondjupa ^{ACTUAL}	51%	148k	75.9k
Zambezi ^{ACTUAL}	51%	97.2k	49.5k
Erongo ^{ACTUAL}	47%	195k	92.1k

Trends of the prevalence of challenges accessing markets over the past 90 days

These graphs, all on a scale from 0% to 100%, show the trend in the prevalence of challenges accessing markets over the past 90 days. The percentages detailed below the region name indicate the change in the prevalence of challenges accessing markets from 90 days ago to today, with regions sorted by the increase in prevalence of challenges accessing markets.



¹ Challenges include both physical and financial constraints.

Annex: Summary of food security and related metrics in Namibia, 2 December 2021

	TOTAL POPULATION OF REFERENCE (MILLIONS)	PEOPLE WITH INSUFFICIENT FOOD CONSUMPTION (MILLIONS)	PEOPLE USING CRISIS OR ABOVE CRISIS LEVEL FOOD-BASED COPING STRATEGIES (MILLIONS)	PEOPLE REPORTING CHALLENGES ACCESSING MARKETS (MILLIONS)
Erongo ^{ACTUAL}	0.20	0.03	0.07	0.09
Hardap ^{ACTUAL}	0.09	0.03	0.03	0.04
Karas ^{ACTUAL}	0.08	0.02	0.03	0.04
Kavango East ^{ACTUAL}	0.15	0.05	0.07	0.08
Kavango West ^{ACTUAL}	0.08	0.03	0.04	0.05
Khomas ^{ACTUAL}	0.43	0.06	0.14	0.23
Kunene ^{ACTUAL}	0.10	0.03	0.05	0.06
Ohangwena ^{ACTUAL}	0.25	0.08	0.09	0.15
Omaheke ^{ACTUAL}	0.07	0.02	0.03	0.04
Omusati ^{ACTUAL}	0.24	0.08	0.09	0.13
Oshana ^{ACTUAL}	0.18	0.03	0.06	0.10
Oshikoto ^{ACTUAL}	0.19	0.05	0.07	0.12
Otjozondjupa ^{ACTUAL}	0.15	0.03	0.06	0.08
Zambezi ^{ACTUAL}	0.10	0.02	0.04	0.05

DEEP DIVE

Key drivers

Click the icons to explore the relationship between hunger and the selected key driver

